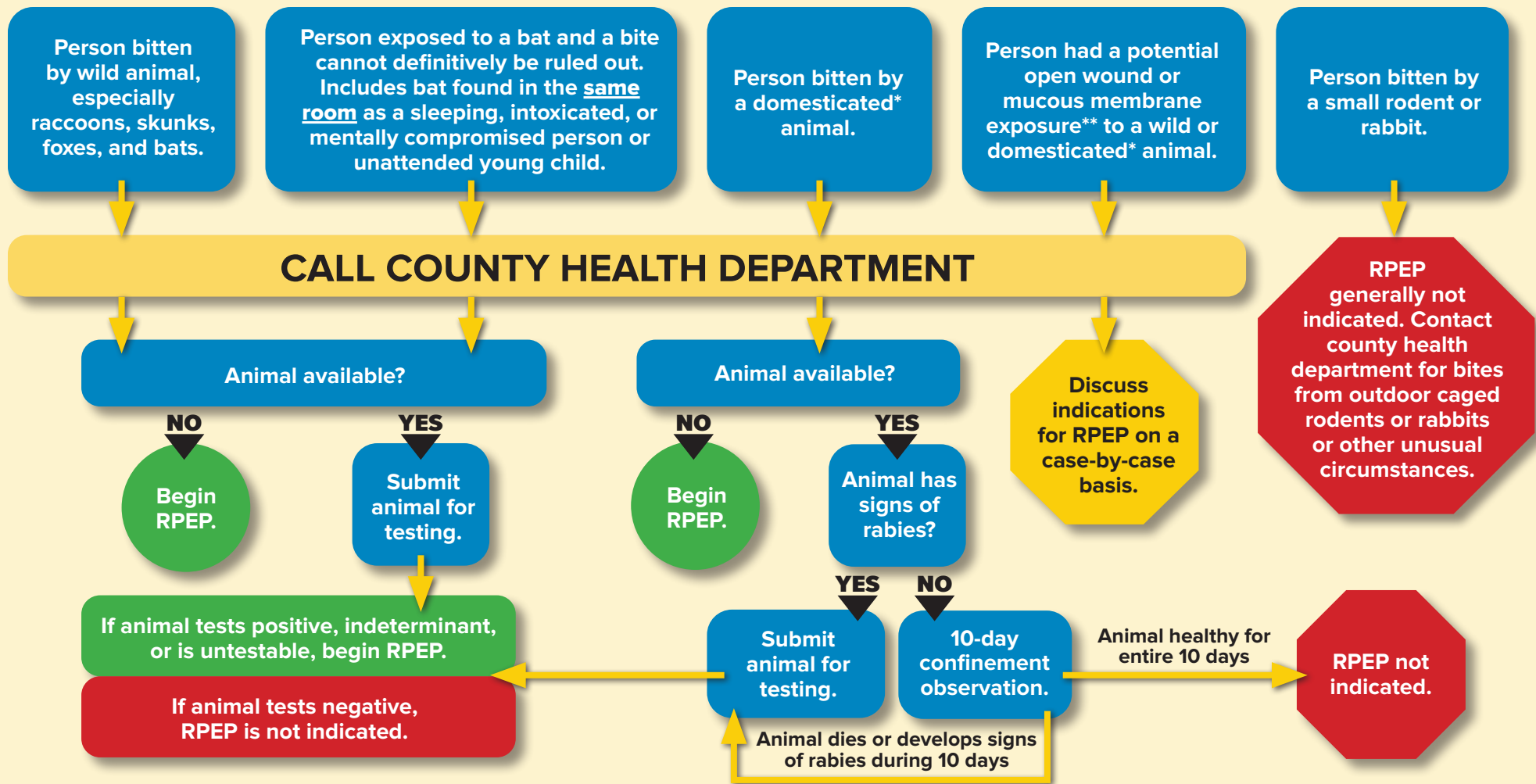


Rabies Post-Exposure Prophylaxis (RPEP) Algorithm



RPEP Protocol:

1. Perform wound care.
2. For someone never previously fully vaccinated for rabies:
 - a. Administer human rabies immune globulin (HRIG), 20 IU/kg body weight, **infiltrated into and around the wound(s) or site of contact, if no visible wound.** If unable to infiltrate the full dose of HRIG into the wound or site of contact, the remainder should be given IM at a site distant from the vaccine site.
 - b. Administer a dose of rabies vaccine intramuscularly in the deltoid (or anterolateral thigh for small children) on days 0, 3, 7, and 14. If the person is immunocompromised, administer a 5th dose on day 28 and a rabies antibody titer 1-2 weeks later.
 - c. **Never** give rabies vaccine in the gluteal area.
3. For someone who was previously fully vaccinated, administer a dose of rabies vaccine on days 0 and 3 (no HRIG).

* Dogs, cats, ferrets, horses, donkeys, mules, cattle, sheep, goats, and pigs.

** Introduction of saliva, cerebrospinal fluid, or spinal cord or brain tissue from a rabid or potentially rabid animal into an open wound or mucous membrane (eyes, nose, mouth).

For more information, visit: [NYSDOH Rabies Guidance & Regulations](https://www.health.ny.gov/rabies/guidance/)



Department of Health